



# Floor Care & Flying Insect Traps

- › Floor Squeegees
- › Handles
- › Mop Buckets & Signs
- › Sanitation Tools
- › Flying Insect Traps



Double Moss Foam Rubber with Metal Frame

Moss Foam squeegee is designed for uneven, grouted and smooth surface floors.

Item Code	Description	Colors	Handle
SP-36631800	18" (45 cm) Soft Black Foam Rubber	Black	2.4 cm Tapered
SP-36632400	22" (55.88 cm) Soft Black Foam Rubber	Black	2.4 cm Tapered
SP-36682400	22" (55.88 cm) Soft Black Heavy-Duty Foam Rubber	Black	Threaded
SP-36633000	30" (76.2 cm) Reinforced Soft Black Foam Rubber	Black	2.4 cm Tapered



Double Foam Rubber Squeegee with Plastic Frame

- All plastic construction will not rust or bend and helps prevent hazard sparks when cleaning-up flammable fluids
- Available in colors to support HACCP compliance

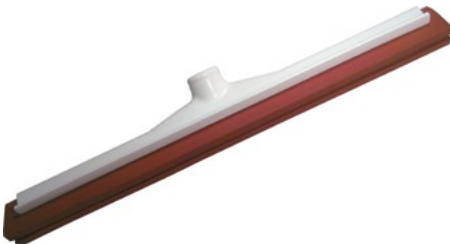
Item Code	Description	Colors	Handle
SP-41567*	18" (45 cm) Double Foam Rubber Floor Squeegee	02 (white), 04 (yellow), 05 (red), 09 (Green), 14 (Blue), 24 Orange, 68 (Purple)	Threaded
SP-41568*	24" (60.96 cm) Double Foam Rubber Floor Squeegee		Threaded



Double Moss Foam Rubber Squeegee with Plastic Frame

- Soft, double foam is fat and oil resistant
- All plastic construction will not rust or bend and helps prevent hazard sparks when cleaning-up flammable fluids

Item Code	Description	Colors	Handle
SP-36691800	18" (45 cm) Red Foam Rubber	Black	94" Threaded
SP-36692200	22" (55.88 cm) Red Foam Rubber	Black	94" Threaded



HANDLES SOLD SEPARATELY; SEE THE NEXT PAGE FOR OPTIONS!



Double Moss Foam Rubber with Metal Frame

- For use with push brooms, sweeps, squeegees and floor scrubs
- Fiberglass handles are available in threaded, tapered/threaded and telescoping
- Self-Locking Flex-Tip Handle offers greater flexibility and reduces handle stress

Item Code	Description	Diameter	Style	Color
SP-41226*	72" (183 cm) Fiberglass Handle with Self-Locking Flex-Tip	25.4 mm	Threaded	00 (White)
SP-41225*	48" (121.92 cm) Fiberglass Handle with Self-Locking Flex-Tip	25.4 mm	Threaded	00 (White), 05 (red), 09 (Green), 14 (Blue)
SP-40225*	60" (152.4 cm) Fiberglass Handle with Self-Locking Flex-Tip	25.4 mm	Threaded	D - Tan
SP-40227*	60" (152.4 cm) Solid Foam Filled Fiberglass Handle with Self-Locking Flex-Tip	25.4 mm	Tapered/ Threaded	05 (Red) , 09 (Green) , 14 (Blue) , 24 (Orange), 68 (Purple)
SP-40220*	60" (152.4 cm) Fiberglass Handle	25.4 mm	Tapered/ Threaded	01 (Brown) , 02 (White) , 04 (Yellow) , 05 (Red) , 09 (Green) , 14 (Blue)
SP-40210*	60" (152.4 cm) Economy Fiberglass Handle	23.876 mm	Female/ Threaded	02 (White) , 04 (Yellow)



Color-Coded Stainless Steel Handle

- Soft, double foam is fat and oil resistant
- All plastic construction will not rust or bend and helps prevent hazard sparks when cleaning-up flammable fluids

Item Code	Description	Diameter	Style	Color
SP-41199C*	60" (152 cm) Stainless Steel Handle with grip	25.4 mm	Threaded	02 (White) , 04 (Yellow) , 05 (Red) , 09 (Green) , 14 (Blue)





Bucket & Wringer Combos

- Made of durable, corrosion resistant polyethylene
- Non-marking casters
- Available in 24.6 liter or 33 liter sizes

Item Code	Description	Colors
SP-36908	24.6 Liter Bucket with Side Press Wringer	04 (Yellow) , 05 (Red) , 09 (Green) , 14 (Blue)
SP-36904	33 Liter Bucket with Side Press Wringer	04 (Yellow) , 05 (Red) , 09 (Green) , 14 (Blue) , 69 (Brown)
SP-36908W04	Side Press Wringer for 24.6 and 33 Liter Mop Bucket	Yellow
SP-3690504	33 Liter Bucket with Down Press Wringer	Yellow



Wet Floor Signs

- Durable polypropylene
- Specially designed feet protect floor finishes
- 36900 locks into place to prevent collapsing
- Compact for easy storage

Item Code	Description	Colors
SP-3690000	Wet Floor Sign (English/Spanish) 25"	Yellow
SP-3690904	Flo-Pac® Economy Wet Floor Sign (English/Spanish/German) 25"h x 11"w	Yellow

Freestanding Caution Cone and Pop Up Caution Cone

- 360° visibility
- Caution message appears in English, Spanish and French
- Pop up Cone case can be mounted to wall for easy access

Item Code	Description	Colors
SP-3694104	Caution Cones And Barriers Caution Cone 36"	Yellow
SP-3694204	Pop-Up Caution Cone 20"	Yellow





Features

- Kleen-Pail, the original dedicated non-food container for safe foodservice cleaning and sanitation
- Available in multiple sizes for front or back-of-the house
- Durable, robust handle design

PAIL USAGE GUIDE

- Sanitizer
- Detergent (Cleaner)
- Blank space for labeling purposes
- Broken Glass Only
- Allergen
- Janitorial

Kleen-Pail®

Item Code	Color	Size
SP-KP97RD	Red	3 quart (2.84 L)
SP-KP97GN	Green	3 quart (2.84 L)
SP-KP196RD	Red	6 quart (5.68 L)
SP-KP196GN	Green	6 quart (5.68 L)
SP-KP196PR	Purple	6 quart (5.68 L)
SP-KP196KCB	Blue	6 quart (5.68 L)
SP-KP196KCYL	Yellow	6 quart (5.68 L)
SP-KP196KCRD	Red	6 quart (5.68 L)
SP-KP256RD	Red	8 quart (7.57 L)
SP-KP256GN	Green	8 quart (7.57 L)
SP-KP320RD	Red	10 quart (9.46 L)
SP-KP320GN	Green	10 quart (9.46 L)

Color-coded pails for use with detergent and sanitizer New embossed feature designed to meet health code Trilingual design aids in training



Kleen-Pail® Stands

Item Code	Item
SP-KPS196	Kleen-Pail stand holds KP196
SP-KPS97	Kleen-Pail stand holds KP97
SP-KPS196WM	Kleen-Pail wall mount stand holds KP196
SP-KPS97WM	Kleen-Pail wall mount stand holds KP97

Allows you to move Sanitizer and Detergent Pails off of the floor or work surface Provides a sanitary storage holder for KP196\* and KP97\*



Kleen-Pail® Pro

Item Code	Color	Size
SP-KPP97RD	Red	3 quart (2.84 L)
SP-KPP97GN	Green	3 quart (2.84 L)
SP-KPP196RD	Red	6 quart (5.68 L)
SP-KPP196GN	Green	6 quart (5.68 L)
SP-KPP256RD	Red	8 quart (7.57 L)
SP-KPP256GN	Green	8 quart (7.57 L)

Color-coded, trilingual pails for use with detergent or sanitizer Curved shape and raised bottom for easy pouring Molded-in handles with embossed, raised lettering to meet health code Built-in debris-catching ribs

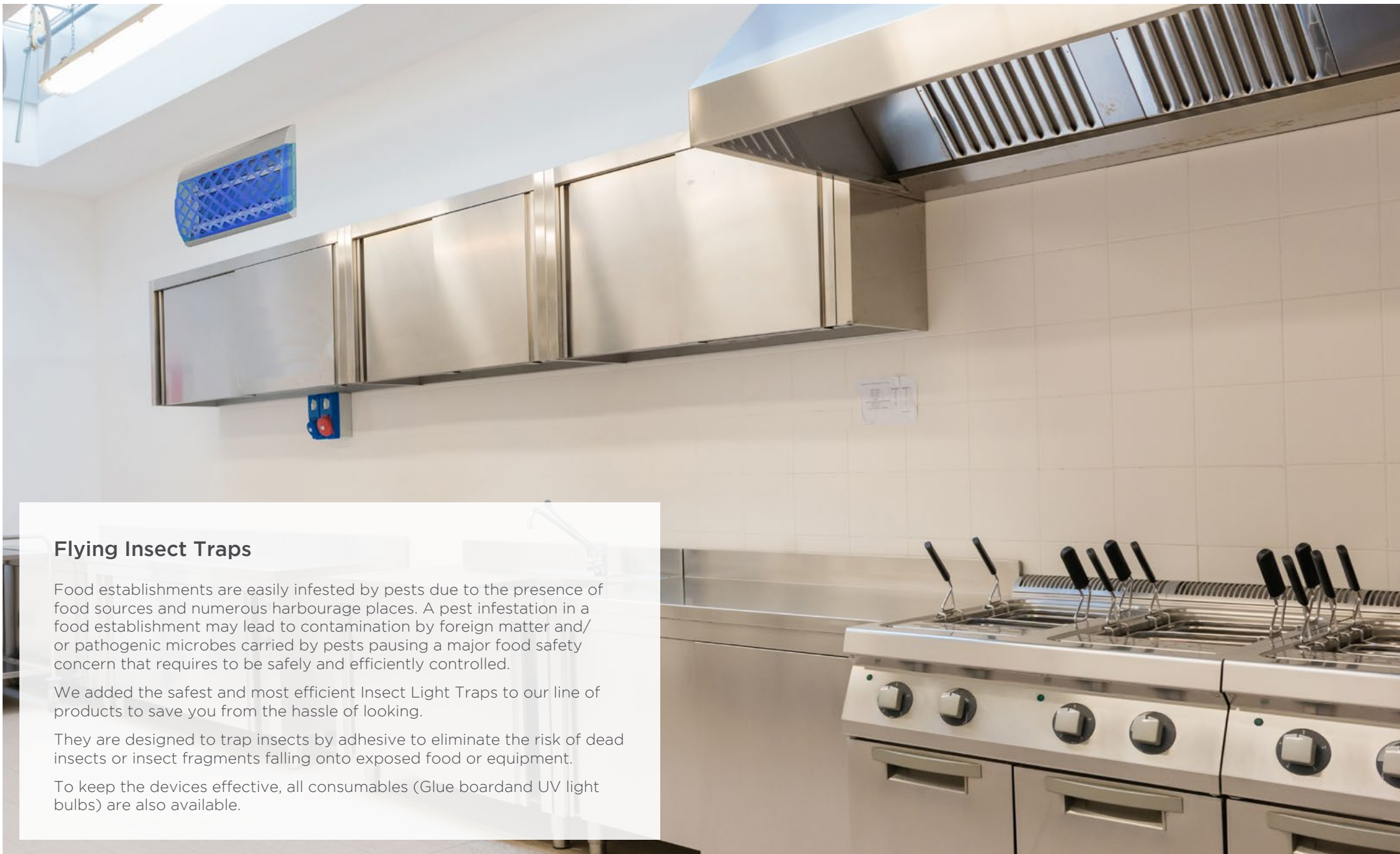


Kleen-Pail® Pro Stands

Item Code	Item
SP-KPPS97	Kleen-Pail Pro stand holds KPP97
SP-KPPS97WM	Kleen-Pail Pro wall mount stand holds KPP97
SP-KPPS196	Kleen-Pail Pro stand holds KPP196
SP-KPPs196WM	Kleen-Pail Pro wall mount stand holds KPP196
SP-KPPS256	Kleen-Pail Pro stand holds KPP256
SP-KPPS256	Kleen-Pail Pro wall mount stand holds KPP256

Allows you to move Sanitizer and Detergent Pails off of the floor or work surface Provides a sanitary storage holder for KP196\* and KP97\*





## Flying Insect Traps

Food establishments are easily infested by pests due to the presence of food sources and numerous harbourage places. A pest infestation in a food establishment may lead to contamination by foreign matter and/or pathogenic microbes carried by pests posing a major food safety concern that requires to be safely and efficiently controlled.

We added the safest and most efficient Insect Light Traps to our line of products to save you from the hassle of looking.

They are designed to trap insects by adhesive to eliminate the risk of dead insects or insect fragments falling onto exposed food or equipment.

To keep the devices effective, all consumables (Glue board and UV light bulbs) are also available.



### Luralite® Cento, 18 watt



A compact and discreet solution, Luralite® Cento is ideal for front of house areas, including bars, cafes and restaurants.

Item Code	Color
SP-ZL011	White
SP-ZL013	Silver

#### Features

- Ideal for front of house applications
- Simple glueboard and tube replacement
- High efficacy UV tubes
- Designed for use with Glupac® glueboards with UV stabilizer
- Robust Construction
- Independently tested and certified to RoHS and relevant European standards
- Tubes: 1 x TPX18
- Glueboard: 1 x INL118
- Suggested area coverage: 25m2

### Luralite® Cento Glueboards



Item Code	SP-INL118
-----------	-----------

- Pack size: 6 glueboards
- Glueboard colour: Yellow
- Recommended effective life: 4-5 weeks
- Board material: Card

### Philips - 18 watt, Compact



Item Code	SP-TPX18
-----------	----------

- Box quantity: 10 tubes per box
- Recommended effective life: 8000 hours
- Wavelength: 368nm

### Luralite Pro, 30 Watt



Developed as a highly effective but discreet solution for insect control, Luralite® Professional is ideal for use in restaurants, bars, cafes and other front of house applications.

Item Code	Color
SP-ZL015/110v	White

#### Features

- Ideal for front of house applications
- Simple glueboard and tube replacement
- High efficacy UV tubes
- Designed for use with Glupac® glueboards with UV stabiliser
- Robust Construction
- Independently tested and certified to RoHS and relevant European standards
- Tubes: 2 x TPX15-18
- Glueboard: 1 x INL121
- Suggested area coverage: 50m2

### Luralite® Cento Glueboards



Item Code	SP-INL121
-----------	-----------

- Pack size: 6 glueboards
- Glueboard colour: Yellow
- Recommended effective life: 4-5 weeks
- Board material: Card

### Philips - 15 watt, 18"



Item Code	SP-TPX15-18
-----------	-------------

- Box quantity: 25 tubes per box
- Recommended effective life: 8000 hours
- Wavelength: 368nm



### Aura® Cento, 22 watt



Stylish and contemporary, the Insect-O-Cutor Aura® decorative flykiller is an ultra discreet unit designed for front-of-house applications.



Item Code	Color
SP-ZL051	Stainless Steel
SP-ZL051-BLACK	Black

#### Features

- Contemporary detailing and elegant clean lines
- Beautifully polished facade
- Slim design ensures that the unit is unobtrusive
- Ultra discreet fly catching glueboard hidden from view
- 100% useful glueboard area ensures maximum efficacy
- Ensures compliance with food hygiene legislation and protects clientele from flying pests
- Dual wavelength Synergetic® technology for an increased catch
- Easy tool free access and efficient servicing
- Quick and simple IEC mains socket, or discreet hard wiring option
- Robust stainless steel and UV stable polycarbonate construction
- Tubes: 1 x TGX22
- Glueboard: 1 x INL198
- Suggested area coverage: 40m2

### Aura® Glueboards



Item Code	SP-INL198
-----------	-----------

- Pack size: 6 glueboards
- Glueboard colour: Yellow
- Recommended effective life: 4-5 weeks
- Board material: Card

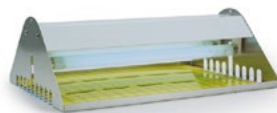
### Synergetic - 22 watt, Circline



Item Code	SP-TGX22
-----------	----------

- Box quantity: 25 tubes per box
- Recommended effective life: 8000 hours
- Wavelength: 368nm-540nm dual peak wavelength

### FlyTrap Commercial, 30 watt



Flytrap Commercial™ provides a hygienic solution to insect control for sensitive areas such as food preparation areas.

Item Code	Color
SP-ZL015/110v	White

#### Features

- Choice of ceiling suspended, slimline wall or discreet wall mounting options
- High efficacy UV tubes
- Designed for use with Glupac® glueboards with UV stabiliser
- All metal construction
- Independently tested and certified to RoHS and relevant European standards
- Tubes: 2 x TPX15-18
- Glueboard: 1 x INF060
- Suggested area coverage: 80m2

### Flytrap Commercial 30 Glueboards



Item Code	SP-INF060
-----------	-----------

- Pack size: 6 glueboards
- Glueboard colour: Yellow
- Recommended effective life: 4-5 weeks
- Board material: Card

### Philips - 15 watt, 18"



Item Code	SP-TPX15-18
-----------	-------------

- Box quantity: 25 tubes per box
- Recommended effective life: 8000 hours
- Wavelength: 368nm



PlusZap, 30 watt



The second generation PlusZap™ range offers a contemporary aesthetic combined with high specification features, creating a stylish killing grid range ideal for commercial environments.

Item Code	SP-ZE122
-----------	----------

Features

- The PlusZap range is available in a range of white, stainless steel or aluminium finish with a choice of 16W or 30W models.
- Modern detailing makes the unit ideal for customer-facing areas
- Staggered tubes create efficient light output, whilst the killing grid offers an effective catch area with easier servicing
- Mains interlocked catch tray is simple to remove for quick and safe maintenance, with anti-blow out folds
- Tool free tube removal for a quick and simple service
- Flexible mounting options for wall, desk or ceiling suspension
- Independently tested and certified to RoHS and all relevant European standards

PlusLamp - 15 watt, 18"



Item Code	SP-TVX15-18R
-----------	--------------

- Retail ready
- Blue UV lamps
- Recommended effective life: 8000 hours
- Wavelength: 368nm

Genus® Liberator™



Designed for areas with heavy insect activity, the Genus® Liberator is powerful and reliable.

Item Code	Description	Dimension
SP-LSC415S-XXX	Stainless Catcher 4 x 15 W lamp standard	462mm x 490mm x 170mm (18.3in x 19.3in x 6.7in)
SP-LSC415"-2-XXX	Stainless Catcher 4 x 15 W lamp sleeved	462mm x 490mm x 170mm (18.3in x 19.3in x 6.7in)
SP-LWK415-2-XXX	Stainless Killer 4 x 15 W lamp standard	462mm x 490mm x 170mm (18.3in x 19.3in x 6.7in)
SP-LSK415S-2-XXX	Stainless Killer 4 x 15 W lamp sleeved	462mm x 490mm x 170mm (18.3in x 19.3in x 6.7in)

Features

- Equipped with external front and back hinging grills that minimise service downtime.
- Tool-free, fast and easy maintenance
- Splash-proof IP45-rated option for wash-down areas
- Two options: a high voltage unit or glue board unit
- Can be mounted on the wall or suspended from the ceiling

Genus® Cobra



The Genus® Cobra is the first insect light trap to utilise Brandenburg's Translucent Technology™, which enables it to catch more flies faster while using less electricity.



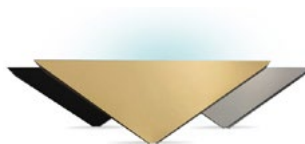
Item Code	Description	Dimension
SP-CT315-01-02-XXX	Translucent 3 x 15 W lamp standard	344mm x 528mm x 128mm (13.5ins x 21.3ins x 5.0in)
SP-CT315-01-02S-XXX	Translucent 3 x 15 W lamp sleeved	344mm x 528mm x 128mm (13.5ins x 21.3ins x 5.0in)

Features

- Premium insect light trap optimised for greater UV light propagation
- Maximised UVA output, along with easy servicing and low running costs, have made the Genus Cobra a reliable standard in the insect control industry.



### Genus® Illume™ Alpha



The Genus® Illumé Alpha is an insect light trap styled to blend seamlessly with elegant, front-of-house décor. Ideal for restaurants and hotel lobbies, the Illumé Alpha operates silently, discreetly attracting flies to its large-capacity glue board.

Item Code	Description	Dimension
SP-ILA30-1BK201X001	Black 2 x 15 W BL lamp standard	162mm x 518mm x 68.5mm (6.4in x 20.4in x 2.7in)
SP-ILA30-1SP201X001	Stainless 2 x 15 W BL lamp standard	162mm x 518mm x 68.5mm (6.4in x 20.4in x 2.7in)
SP-ILA30-1BR201X001	Brass Finish 2 x 15 W BL lamp standard	162mm x 518mm x 68.5mm (6.4in x 20.4in x 2.7in)
SP-ILA30-1WH201X001	White 2 x 15 W BL lamp standard	162mm x 518mm x 68.5mm (6.4in x 20.4in x 2.7in)

#### Features

- Modern-styled light fixtures available in black, white, stainless steel and brass
- Easy servicing with no tools required
- Two 15W bulbs using either black light or black light blue lamps for increased insect attraction

### Genus® Eclipse Ultra



The Genus® Eclipse Ultra was made for public areas in which fly control is a necessity. Incorporating Translucent Technology™ to provide the widest UVA coverage for a larger fly catch, this unit features a customisable front insert in which the customer can put their brand to make the unit blend in with front-of-house areas or advertise their latest promotion.

#### Genus® Eclipse Ultra

Item Code	Description	Dimension
SP-ECU30-3TX201XXXX	translucent black light blue lamps	375mm x 266mm x 85mm (14.76in x 10.47in x 3.34in)
SP-ECU30-1TX201XXXX	translucent black light lamps	375mm x 266mm x 85mm (14.76in x 10.47in x 3.34in)

#### Features

- Customisable front panel provides branding space
- Available with black light blue for a pleasant aesthetic in dining areas
- Large glue board area to maximise fly catch
- Easy to service and clean

### Genus® ECO 30



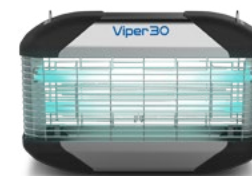
Genus®ECO 30 offers fast fly catch with efficient running costs for use in a number of application areas. The unit can be placed in a variety of locations due to its flexibility of being able to wall mount it either horizontally or vertically.

Item Code	SP-ECO 30
-----------	-----------

#### Features

- Aluminum finish
- 2 x 15 Watt lamps and integral reflectors for increased UVA output
- Horizontal or vertical mounting
- Easy opening hinged cover for fast, both hands-free servicing
- Large, fully grid-marked glue board for maximum catch area and HACCP compliance

### Viper 30



Strong insect light trap with options making it adaptable to the space and level of insect activity. Compact and versatile, this insect trap comes with the option for a high voltage grid or a glue board, making it easily adaptable to optimise fly catch depending on the space and level of insect activity.

#### Viper 30 Zapper

Item Code	Description	Dimension
SP-V3C30-1GXXXXXXX	Catcher 2 x 15 W lamp standard	337mm x 511mm x 134mm (13.27in x 20.11in x 5.27in)
SP-V3C30-2GXXXXXXX	Catcher 2 x 15 W lamp sleeved	337mm x 511mm x 134mm (13.27in x 20.11in x 5.27in)
SP-V3K30-1GXXXXXXX	Killer 2 x 15 W lamp standard	337mm x 511mm x 134mm (13.27in x 20.11in x 5.27in)
SP-V3K30-2GXXXXXXX	Killer 2 x 15 W lamp sleeved	337mm x 511mm x 134mm (13.27in x 20.11in x 5.27in)

#### Features

- Sleekly designed stainless steel finish
- Easy, tool-free servicing
- Optional sleeved lamps for better containment in food production areas
- Can be mounted on the wall or suspended from the ceiling



Armadilha 15R



With its discreet and attractive design the Armadilha 15R is recommended for use in domestic and professional environments. The Armadilha 15R is designed to be placed as either a free-standing or wall-mounted unit.

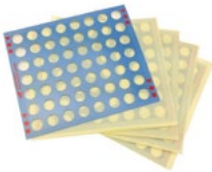
Features

- Effective coverage of areas up to 15 m2
- Unit can be used in a wide variety of applications
- Glue board placed out of sight and is easy to replace from the top.
- Plastic housing offers durability.
- Easy to service with direct access to lamp, board and starter.
- Meets ISO 9001 / rohs / CE standard. Unit is HACCP compliant.
- The heat entrapment design ensures that insects fly in faster.
- High powered effective UV-A lamp.

Item Code

SP-Armadilha 15R

Glue Board Armadilha 15R



Item Code

SP-AL-095S

Pack

Pack of 4

Phillips 9 Watt UV-A



Item Code

SP-SC9W UV-A PBULB

i-trap 25R



With its innovative design, the i-trap 25R is recommended for use in homes, offices, shops and restaurants.

The i-trap can be mounted in two positions on the wall (square or diamond position) or free standing.

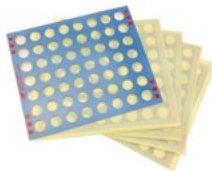
Features

- Wall Mounting / Free Standing
- Effective coverage of areas up to 25 m2
- Unit can be wall mounted in two different viewing positions. (square or diamond)
- Unit can be used as a table top model.
- Glue board placed discreetly out of sight.
- Metal housing offers long-term durability.
- Easy service, direct access to lamp, board and starter.
- Meets ISO 9001 / RoHS & the CE standard.
- High powered effective UV-A lamp.
- For use in homes, offices, shops and restaurants

Item Code

SP-i-trap 25R

Glue Board I Trap 25R



Item Code

SP-AL-070

Pack

Pack of 10

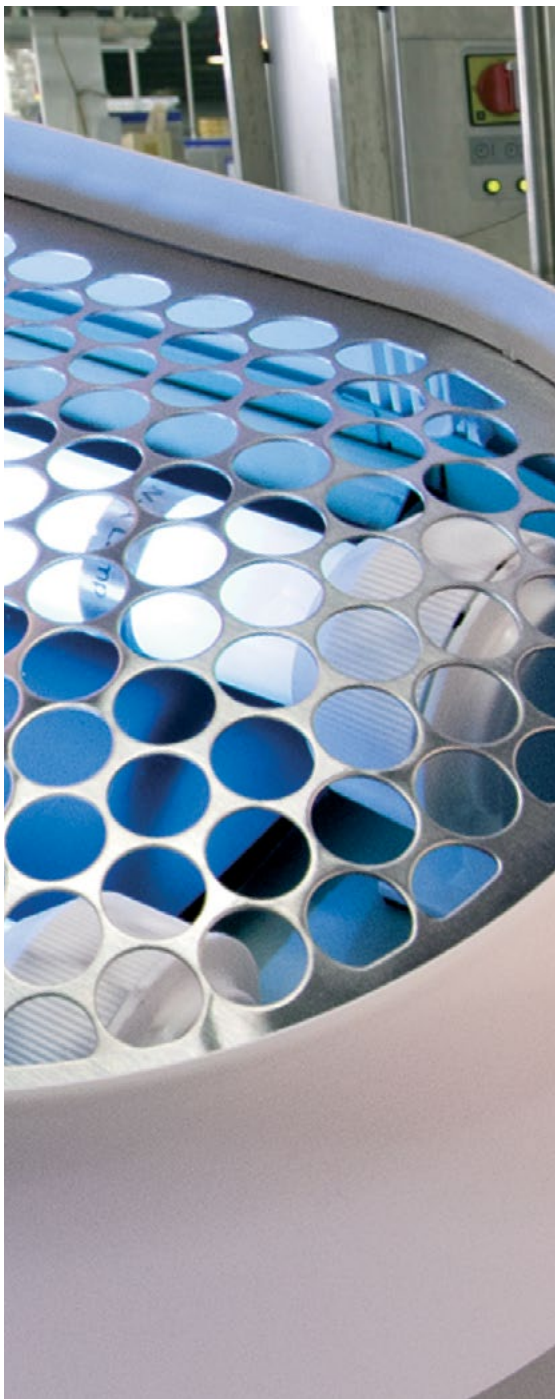
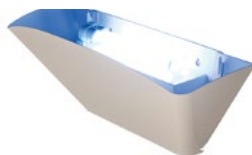
Phillips 9 Watt UV-A



Item Code

SP-SC9W UV-A PBULB

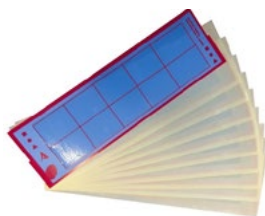
- ???????

**I-Trap 35E**

With its innovative design, the i-trap 35E is recommended for use in homes, offices, shops and restaurants

 **I-TRAP 35**
**Item Code**

SP-I-Trap 35

**Glue Board I Trap 35E****Item Code**

SP-AL-044

**Pack**

Pack of 10

**Flex-trap 45**

With its revolutionary design, the Flex-trap 45 is recommended for use in homes, offices, shops and restaurants.

**Item Code**

SP-Flex-trap 45

**Glue Board I Trap 45E****Item Code**

SP-AL-045BL

**Pack**

Pack of 10

**Features**

- In its wall mounted position the unit is very discrete.
- Unit can be used in a wide variety of applications.
- Glue board discreetly placed out of sight and is easy to replace.
- Metal housing offers durability.
- Effective coverage of areas up to 35 m2.
- Easy to service with direct access to lamp, board and starter.
- Meets ISO 9001 / RoHS & the CE standard.
- Durable quality components, industrial design.
- High powered effective UV-A lamp.
- 2 year full guarantee on the mechanical aspects.

**Phillips 18 Watt UV-A****Item Code**

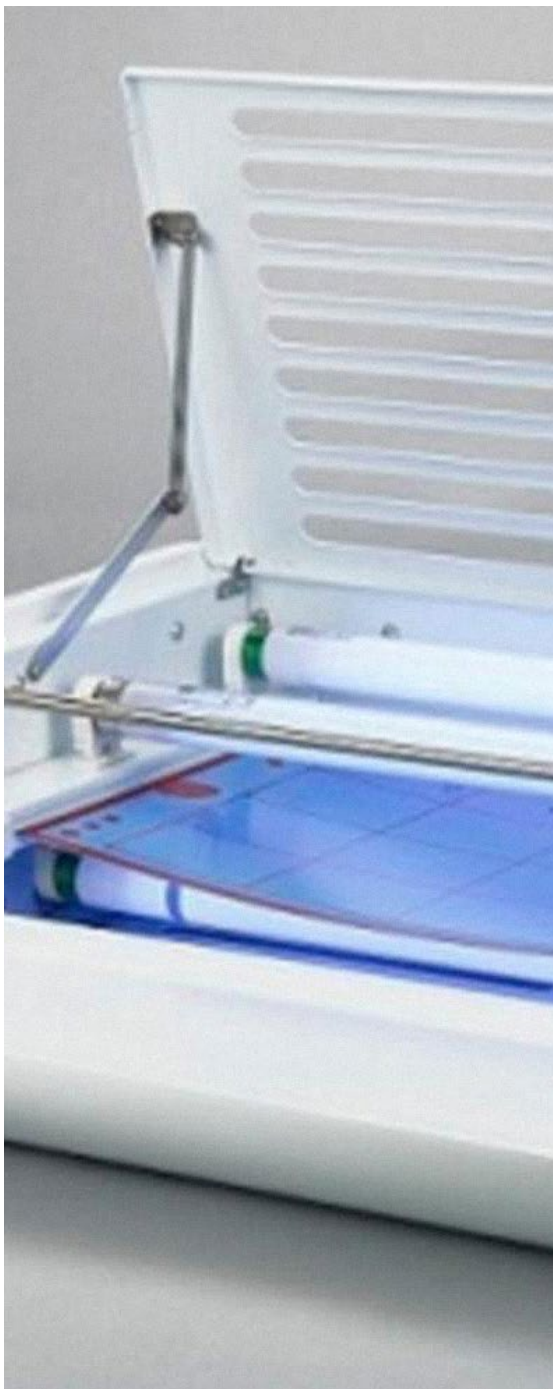
SP-SC18W UV-A PBULB

**Features**

- The unit can be used in 10 different mounting positions including on the wall, ceiling or free standing.
- Up to 4 units can be linked together by means of an optional interlink cable.
- Glue board discreetly placed behind the lamp.
- The Philips Longlife lamp is specifically designed to match the fly's vision spectrum with the lamp's output, for optimum attracting power.
- Effective coverage of areas up to 45 m2.
- Easy to service with direct access to lamp, board and starter.
- Meets ISO 9001 / RoHS & the CE standard. Unit is HACCP compliant.
- 30% improved performance over conventional units due to its unique attraction grid, which reflects the light onto the landing spot thereby stimulating the landing behaviour of flying insects.
- Special brackets available, for different mounting locations.
- 2 year full guarantee on mechanical aspects.

**Phillips 15 Watt UV-A Long Life****Item Code**

SP-SC15W UV-A PBULB

**i-trap 50E**

With its revolutionary design, the i-trap 50E / i-trap50B is recommended for use in homes, offices, shops and restaurants.

**Item Code**

SP-i-trap 50E

**Glue Board I Trap 50E****Item Code**

SP-AL-001SBL

**Pack**

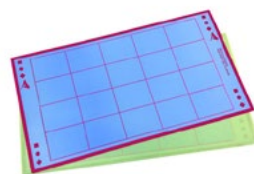
Pack of 10

**I-Trap 120 E**

With its innovative design, the i-trap 120 LED is recommended for use in offices, shops and restaurants.

**I-TRAP 120E****Item Code**

SP-i-trap 120E

**Glue Board I Trap 120E****Item Code**

SP-AL-001DBL

**Pack**

Pack of 10

**Features**

- The unit can be mounted onto the wall.
- The transparent front grid offers discretion and improved efficacy.
- Glueboard discreetly placed behind the lamp.
- UV-A lamps [Fluorescent]
- In close partnership with Philips, Alcochem Hygiene has developed a range of powerful UV-A lamps, used for insect trap applications: the Long-life UV-A lamps.
- i-trap 50B – High powered effective UV-A lamp.
- GLUEBOARDS : Insects are caught on a glue layer, which preserves them over time. The caught insects can be counted and insect species can be analysed, which offers clear advantages in an IPM approach.

**Phillips 15 Watt UV-A Long Life****Item Code**

SP-SC15W UV-A PBULB

**Features**

- The unit can be mounted onto the wall or onto the ceiling.
- Effective coverage of areas up to 120 m2
- Effective & proven design
- Energy saving UV-A LED technology offers up to 298 kW of savings per unit per year. (comparing to the unit with fluorescent lamps)
- 3 year lifespan (25.000 hrs) of the UV-A LED lamp
- The aluminium housing offers a light but strong body, easy to handle.
- Fast and simple maintenance of the unit.
- Glue board placed discreetly behind the lamp, which offers optimized performance
- 2 years of guarantee on unit

**Phillips 15 Watt UV-A Long Life****Item Code**

SP-SC15W UV-A PBULB